



# Sitecore Adaptive Print Studio Creating and Deploying PDF Joboptions

# Creating and Deploying PDF Job Options

## Introduction

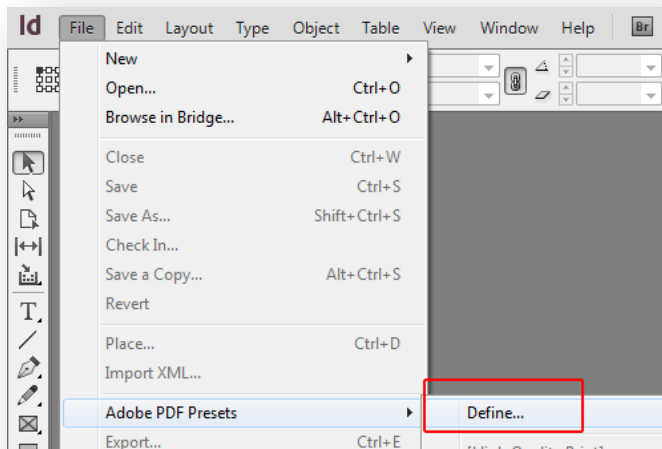
This procedure describes how to create and deploy custom PDF joboptions. It assumes that you use a server-based production environment and a Print Processing Job item.

The scenario is based on creating new items and settings. You could also decide to change existing items and settings. For example, you could change an existing joboptions setting and deploy that file to the server.

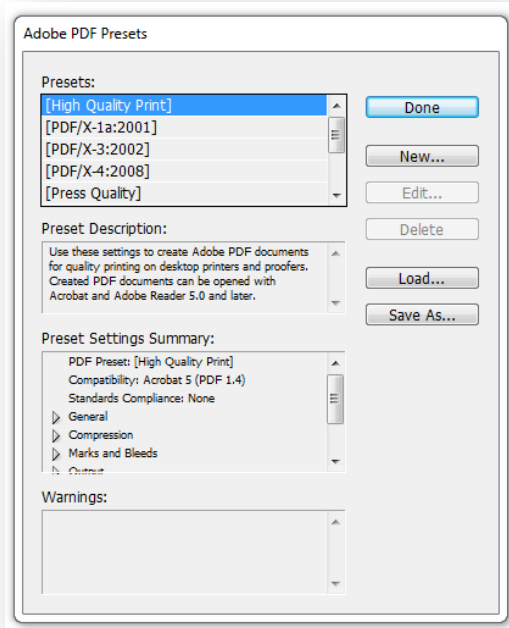
## Creating a Custom Joboptions File

To create a custom PDF export settings file (.joboptions):

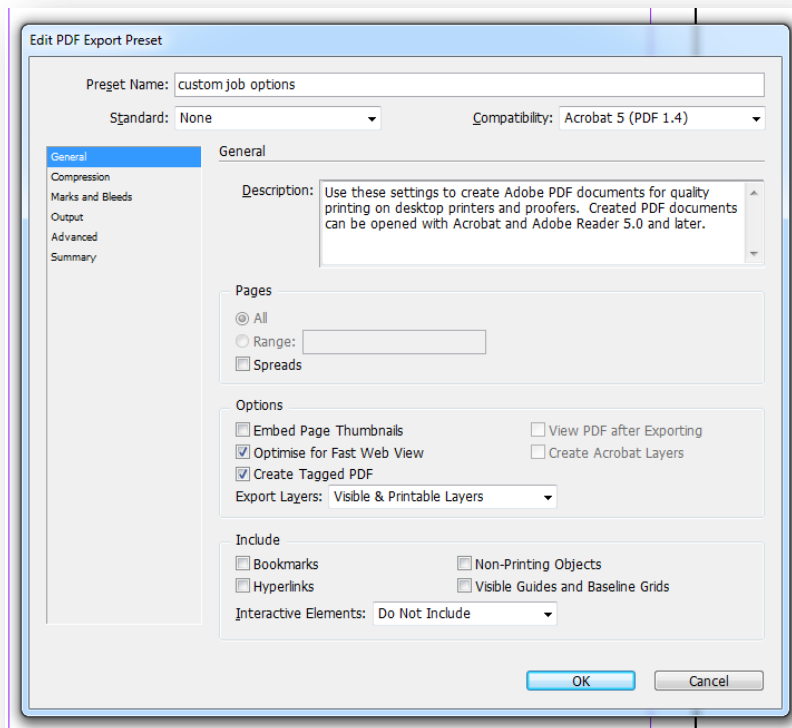
1. Open InDesign desktop.
2. From the **File** menu, click **Adobe PDF Presets**, and **Define**.



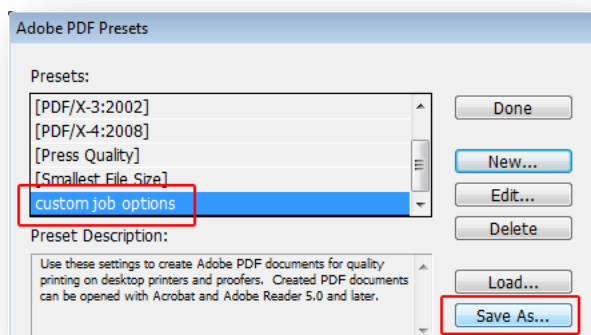
3. In the **Adobe PDF Presets** dialog box, click **New**.



- In the **Edit PDF Export Preset** dialog box, edit the presets. Make sure to enter a name in the *Preset Name* field.

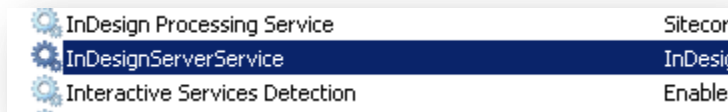


- When ready, click **OK**. The new PDF export setting item will appear in the list.
- With the new item selected, click **Save As** and save the file (.joboptions).



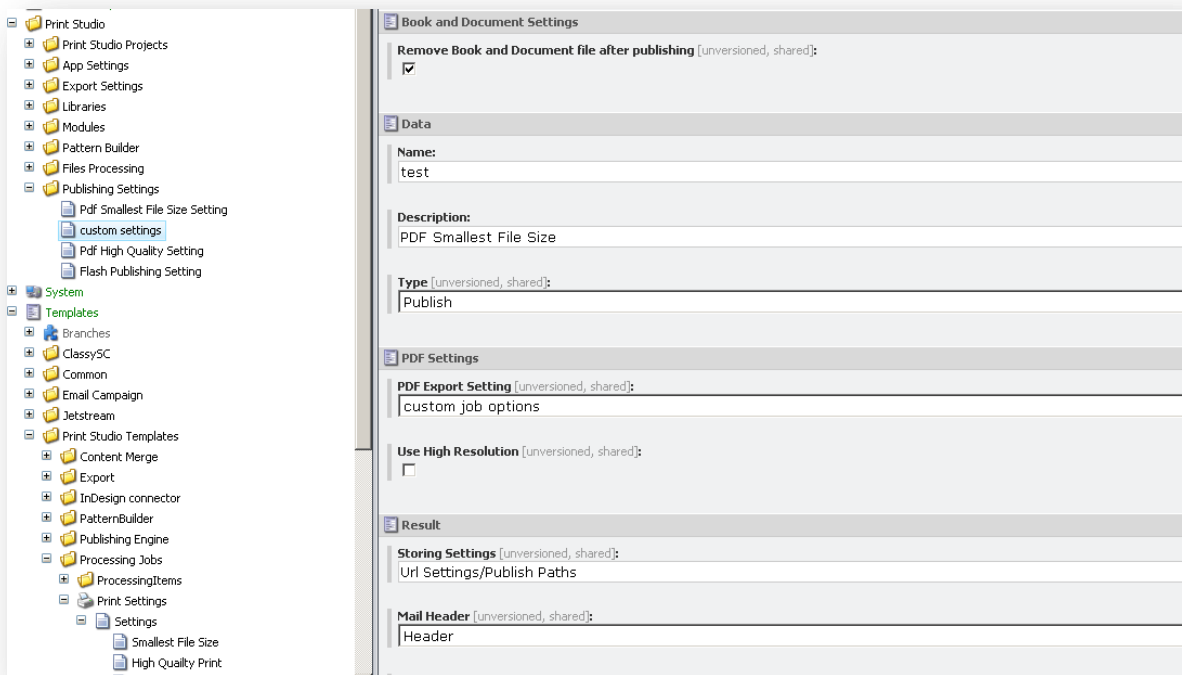
- Deploy the .joboptions file to the InDesign server. The joboptions are usually located in  
C:\programData\Adobe\Adobe PDF\Settings

8. Restart the *InDesignServerService*.



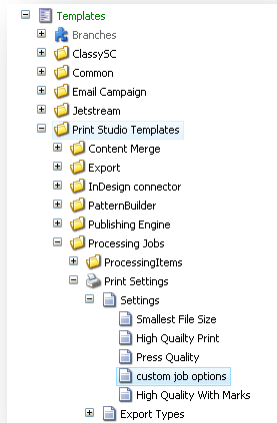
## Deploying a Custom Joboptions File

When you make use of a Print Processing Job item in a server based production environment, this is the procedure you need to follow to make use of the previously created joboptions.

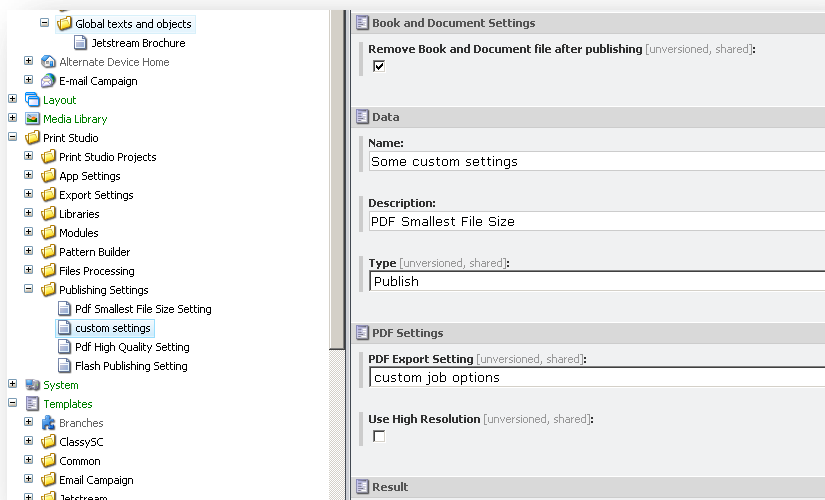


To deploy joboptions:

1. Create a new item in: `Templates\Print Studio Templates\Processing Jobs\Print Settings\Settings`. The item name needs to correspond to a previously created joboption.



2. Create a new *Print Processing Job* item in: `Sitecore\Print Studio\Publishing Settings`
3. Set the *PDF Export Setting* field to the previously created item. Change any settings if necessary.



### Note

If you are using a server-based solution, do not forget to publish the new items to the web database.

## Problem solving

What can you do when you do not get the desired result? For example, because the custom joboptions are not used or no PDF is created:

- Check the XML. In the end, it is the rendered XML that controls how the InDesign file is rendered and to what format (PDF in this case). In order to make sure all the Sitecore settings are created correctly, open the rendered XML (located in the PublishingCache folder) and check the value of *PDFExportSetting* attribute of the *Book* element. That value needs to correspond to the *Preset Name* of the created PDF joboption.

```
<?xml version="1.0" encoding="utf-8" standalone="yes" ?>
- <Project RequestSender="0" name="Jetstream Brochure" SitecoreID="{0AC7AE5F-4E8A-4039-B0AC-4F629AC94E8E}" Units="mm">
- <Books>
- <Book RequestSender="0" name="P_Book" SitecoreID="{5F0832A2-C23A-4513-B2F4-71549E41E417}" CreateBook="" BookFilename="" ExportSWF="False" ExportPDF="True" PDFFilename="C:\APSPublishing\SWFFilename"" Repaginate="False" PrintBook="False" PrintPreset="" PageOrder="Odd" BlankPage="False" AutoUpdate="True" ConvertVars="True" PDFExportSetting="custom job options" UseHighRes="True">
- <Documents>
- <Document RequestSender="0" name="Brochure" SitecoreID="{CF3BF5E9-4D92-46A7-A6DE-BE30260CF34E}" Type="Dynamic" PageWidth="215.89999999999998" PageHeight="279.4" Bleed="3.175" MasterFilename="C:\APSPublishing\PublishingCache\JetStream/en\0ac7ae5f-4e8a-4039-b0ac-4f629ac94e8e\{BCE47906-D6AC-44F4-ABAE-BB22722DC8A1}.indd" DocFilename="C:\APSPublishing\PublishingCache\JetStream/en\0ac7ae5f-4e8a-4039-b0ac-4f629ac94e8e\Brochure_CF3BF5E9.indd" InsertFile="False" SaveAs="" PageCount="" ScriptFilename="" MarkFontSize="58" MarkFontColor="#555555">
- <Colors>
- <Swatch Name="Black">
<Mode>CMYK</Mode>
<Cyan>0</Cyan>
```

- If the value corresponds to the *Preset Name*, that means all your Sitecore settings are correct. In that case, restart InDesign server or perhaps even restart the server to make sure InDesign server makes use of the deployed joboptions file. Also, make sure the joboptions file is located in the correct folder on the server.
- If the value does not correspond to the *Preset Name*, that means your Sitecore settings are incorrect or you are not calling the correct Print Processing Job item in your code.